

DC-30

Diagnostic Ultrasound System




Primary Care with Great Vision

FullHD



To deliver on the promise of quality health care within reach, Mindray always devote to contribute more for Primary Healthcare Service with exceptional capability.

As an innovator, Mindray keeps on providing the progressive solution to envision your improving mind. The DC-30 with Full HD ultrasound system delivers the practical clinical performance for primary care.

- **Higher Imaging Definition**
- **Higher User-Oriented Design**
- **Higher Reliable Dependence**



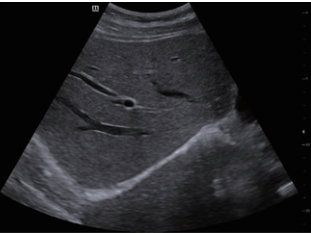
Higher Imaging Definition

Full HD display with detailed clarity guarantee, the DC-30 with Full HD will help you complete your daily exams precisely and effectively.

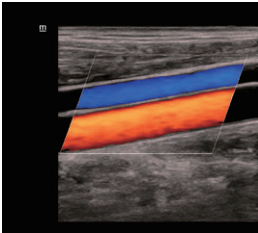
Classic imaging technologies: enhancing the quality for diagnosis

- **iClear**: speckle-reduction imaging technology
- **PSH**: Phase Shift Harmonic imaging
- **iBeam**: spatial-compounding imaging technology

Optimized transducers family: wide range of basic full-body clinical application coverage, including ABD/OB (3D/4D) /GYN and so on



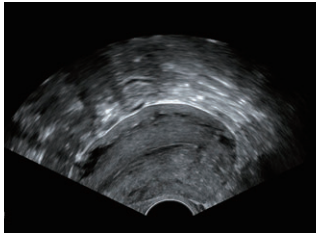
Normal Liver 2D



CCA Color



Fetal Cerebral



Uterus 2D

Higher User-Oriented Design

Smart & auto application is easier for full-body scanning, including 3D/4D imaging

- **Smart Face**: Intelligently remove occlusions and eliminate noise for fetal face
- **Smart OB**: Accurate auto measurements for fetal parameters
- **iLive**: Realistic view of the fetus with human skin-like images
- **iNeedle**: Clear visualization of actual needle tip and shaft
- **Auto IMT**: Automatic measurement for Intima-Media Thickness

Higher Reliable Dependence

External ergonomic design for the convenience of use

21.5" full HD LED monitor

Invisible audio speaker

Height adjustable control panel

Space for placing the sundries

1 TB hard disk

3 active transducer sockets

Built-in battery for 1.5h scanning



EMC (Electro Magnetic Compatibility)

By obtaining the CB Test Certificate, DC-30 with Full HD reaches the strict anti-interference level assurance, which ensures the stability of its imaging quality.



Class B (Power supply requirement)

The power supply level required by DC-30 with Full HD is Class B. It can work under not only hospital power supply condition (Class A), but city power supply condition (Class B), and it offers you more safety and compatibility when you operate DC-30 with Full HD in complicated environment.



iPower (built-in battery)

Configured with a built-in battery, which has obtained the CB Test Certificate (the certification for battery reliability approval, DC-30 with Full HD supports scanning for more than 90 minutes without external power supply, which enhances the continuity of your daily work even when the power supply is poor, and ensures the mobility.