

With over 20 years of experience, Mindray hosts a wide range of ultrasound imaging solutions including cart-based and portable systems. Being exported to over 190 countries, Mindray ultrasound systems are today being used by medical professionals for general as well as highly dedicated clinical utility. With a global R&D base spanning over Asia, Europe and America, the ultrasound solutions by Mindray are a result of an integral cooperation with the medical community, allowing for the ultrasound systems to be extremely user centric in terms of performance and usability. Mindray is well positioned to become one of the leading ultrasound imaging solutions provider.



DP-30 / DP-20 / DP-10

New Generation Doppler Ultrasound System

<p>Mindray Building, Keji 12th Road South, High-tech Industrial Park, Nanshan, Shenzhen 518057, P.R. China Tel: +86 755 8188 8998 Fax: +86 755 26582680 E-mail: intl-market@mindray.com www.mindray.com</p> <p>Mindray is listed on the NYSE under the symbol "MR"</p>	<p>mindray healthcare within reach are registered trademarks or trademarks owned by Shenzhen Mindray Bio-medical Electronics Co., LTD. © 2014 Shenzhen Mindray Bio-Medical Electronics Co., Ltd. All rights reserved. Specifications subject to changes without prior notice. P/N:ENG-DP-30-20-10-210285x4P-20150806</p> <p>mindray</p>
---	---

mindray
healthcare within reach

DP-30 / DP-20 / DP-10

New Generation Doppler Ultrasound System

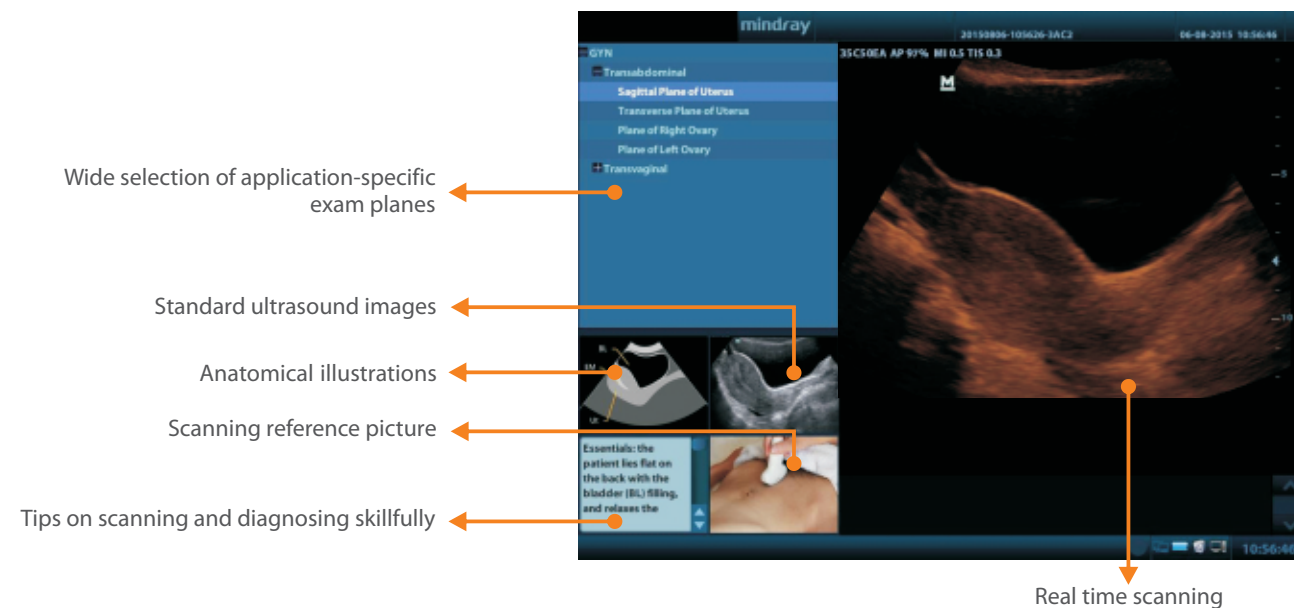
With added smartness, DP-30, DP-20 and DP-10 are ideal choices for B/W system providing you with best-in-class combination of performance and cost. With new platform, based on Intel's powerful processor, DP-30, DP-20 and DP-10 form an integral part of Mindray's new generation of portable B/W ultrasound systems, equipped with latest imaging technologies and convenient workflow operations, which are currently being used in Mindray's high-end systems. Especially, DP-30, DP-20 and DP-10 support superb PW Doppler imaging to access blood flow in different clinical conditions, helping you to enhance your diagnostic confidence.

Enhanced Diagnostic Confidence

- PW Doppler imaging meets higher requirements
- Tissue Harmonic Imaging (THI) for enhanced contrast resolution
- iTouch for quick image optimization
- iClear for Speckle Reduction Imaging, providing clear and sharp lesion contours
- iZoom for instant full screen image expansion

Simplified Guidance for Your Scanning

On board software iScanhelper of DP-30, DP-20, DP-10 help you to get a complete guidance on 'how & what' of ultrasound scanning. It offers references during live scanning on Abdomen, Obstetrics, Gynecology, Small Part and Urology applications.



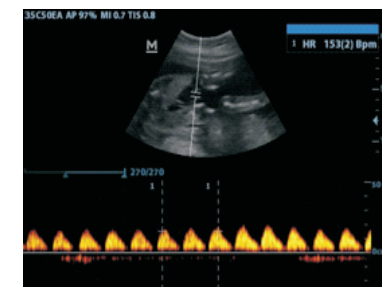
Streamlined Workflow

- iStation for integrated patient data storage allowing you to archive, review and retrieve data efficiently
- iStorage for instant images and reports transfer to PC
- User-defined keys for programmable personalized operations
- One-key image/ cine storage to local disk or USB drive
- Lithium battery supporting up to 1.5 hour of continuous scanning
- 320GB hard disk



Exceptional Ergonomic Design

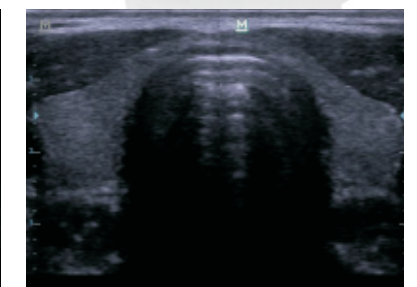
- High resolution 12.1" LED with tilt functionality
- Max two transducer connectors
- User friendly control panel with backlit
- Light and compact design for extreme portability



PW Doppler image of umbilical cord



Liver



Thyroid with Dual Merge