

The materials and information provided via this brochure are distributed internationally, but not all the products or services found on this brochure are necessarily available in your country or area. Please contact local office or agents to make sure of the availability of the relevant products or services.

Mindray Medical Netherlands B.V.
Drs.Wvan Roeyenstraat 8, 3871 AN Hoevelaken, The Netherlands
Voice: (31-33) 254-4911
Fax: (31-33) 253-4280

Mindray Medical Italy S.r.l.
Via Leonardo DA Vinci, 158, 20090 Trezzano Sul Naviglio (MI), Italy
Voice: (39-02) 5737-401
Fax: (39-02) 5523-2018

Mindray Medical España S.L.
Avenida Manoteras 38, Edificio B, Bajo B008, 28050-Madrid Spain
Voice: (34-91) 392-3754
Fax: (34-91) 392-3756

Mindray Medical Germany GmbH
Goebelstrasse 21, 3. OG, 64293 Darmstadt
Voice: (49 6151) 3910 0
Fax: (49 6151) 3910 300

Mindray (UK) Limited
Mindray House, Kingfisher Way, Hinchinbrooke Business Park,
Huntingdon, Cambs, PE29 6FN
Voice: (44) 1480-416-840
Fax: (44) 1480-436-588

Mindray Medical France SARL
Europarc Creteil 1 allée des cerisiers 94000 CRETEIL, France
Voice: (33-1) 4513-9150
Fax: (33-1) 4513-9151

Mindray Medical Sweden AB
Rissneleden 136, 174 57 Sundbyberg, Sweden
Voice: (46) 8 555 54 121

Mindray Medical Rus Co.Ltd
2 Zvenigorodskaya Street, 13, bld 41, 123022 Moscow, Russia
Voice: (7-499) 553-6036
Fax: (7-499) 553-6039

Mindray Medical Colombia S.A.S
Room No.702, Torre UNIKA, Carrera 9 No.77-67, Bogota, Colombia
Voice: (57-1) 3130892 / 3210916

Mindray do Brasil – Comércio e Distribuição de Equipamentos Médicos Ltda.
Rua Tavares Bastos, 329, Perdizes, São Paulo - SP,
CEP 05012-020
Voice: (55-11) 3124-8026
Fax: (55-11) 3078-8035

Mindray Medical Mexico S. de R.L. de C.V.
Félix Parra # 175 Colonia. San José Insurgentes Sur Delegación Benito
Juárez 03900 México, D. F.
Voice: (52-55) 5661-9450 / (52-55) 5662-6620
Fax: (52-55) 5662-6597

PT.Mindray Medical Indonesia
The East 11th Floor, Unit 08 Jl. Dr. Ide Anak Agung Gde Agung Kav.
E 3.2 No.1 Jakarta 12950
Voice: (6221) 2902-7280
Fax: (6221) 2902-7283

Mindray Medical Egypt
Ground Floor -11 El Imam Metwally El Sharawy Street,
Sheraton Heliopolis - El Nozha, Cairo, Egypt
Voice: (2) 02 22691047
Fax: (2) 02 22691046

Mindray Medical Australia
ADD: 19 Harker St, Burwood VIC 3125, Australia
Voice: (61-3) 9830 6610
Fax: (61-2) 9550 2841

Mindray Medical Nigeria

Mindray Medical India Pvt. Ltd. (Delhi Office)
16th floor, Building No. 9-B, DLF Cyber City, DLF Phase-3,
Gurgaon-122002, Haryana
Voice: (91-124) 4632-488
Fax: (91-124) 4632499

Mindray Medical India Pvt. Ltd. (Mumbai office)
B-404, City Point, Andheri Kurla Road, Andheri East, Mumbai,
400 059, India
Voice: (91-22) 4020-0000
Fax: (91-22) 4020-0011

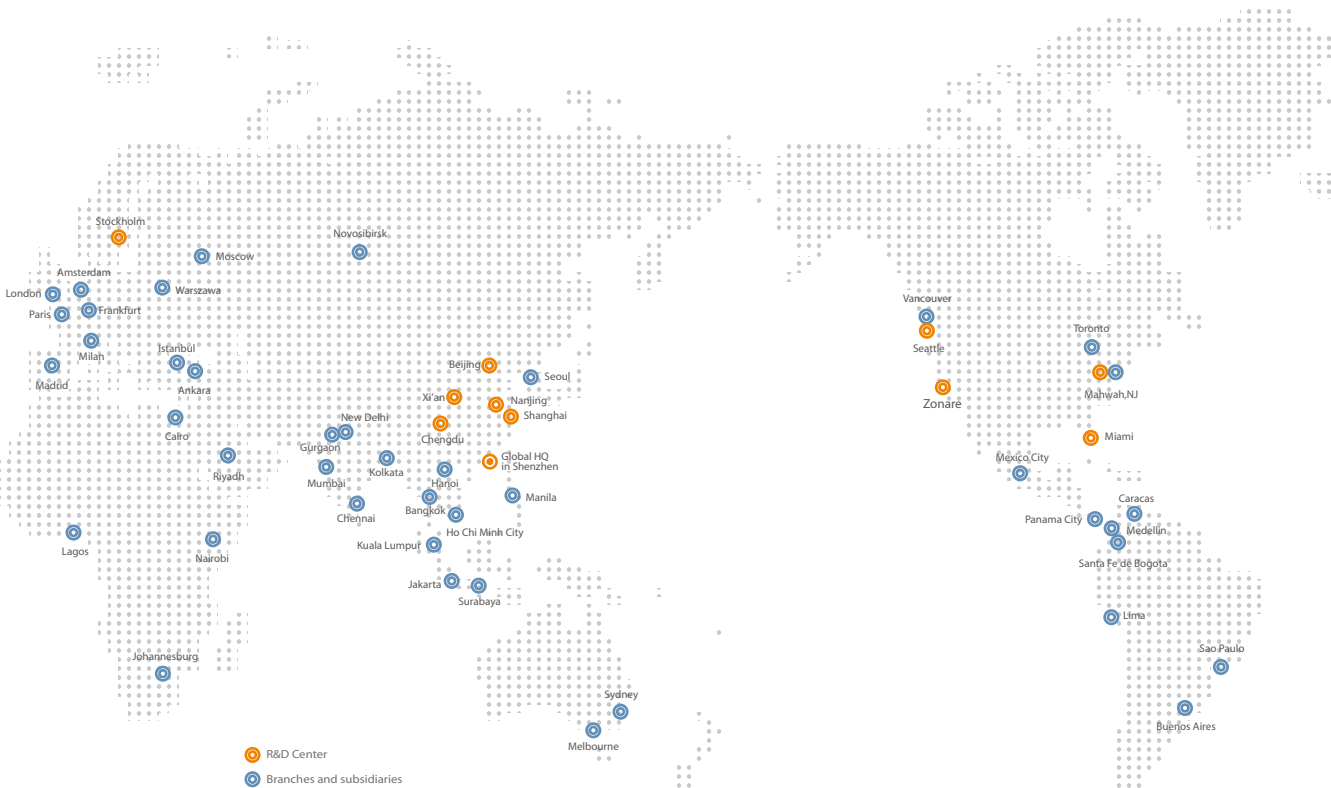
Mindray Medikal Teknoloji Istanbul Ltd. Sti.
KÖYALTI MEVKİİ 29 EKİM CAD.N.1 KUYUMÇUKENT 2.NO.PLZ.3.KT.
D.1- 9 34520 BAĞÇELİEVLER/YENİBOSNA, İSTANBUL, TÜRKİYE
Voice: (90-212) 482 08 77
Fax: (90-212) 482 08 78

Mindray Medikal Teknoloji Istanbul Ltd. Sti. Branch Office Ankara
TURAN GÜNEŞ BULVARI ALEKSANDER DÜBÇEK CAD. NO:18/A
ÇANKAYA/ANKARA, TÜRKİYE
Voice: (90-312) 441 96 92
Fax: (90-312) 441 96 93

Mindray Medical Vietnam Co.,Ltd.
Unit 2, 4th Floor, "B" Building, Broadway Office Park,
102 Nguyen Luong Bang Blvd., Tan Phu Ward, Dist. 7, HCMC, Vietnam
Voice: (84) 8 5413-6970
Fax: (84) 8 5413-6971

Mindray Medical Thailand Limited
1768 Thai summit Tower Room 407, 4th floor, New petchaburee Road,
Kwaeng Bangkapi, Khet Huai Khwang, Bangkok 10320, Thailand
Voice: (66) 2652-7288
Fax: (66) 2652-7266

Mindray Medical Korea
KNI Tower 9F 823-19 Yeoksam dong, Seoul-ganum, Korea
Tel: 008225688040
Fax: 008225688042



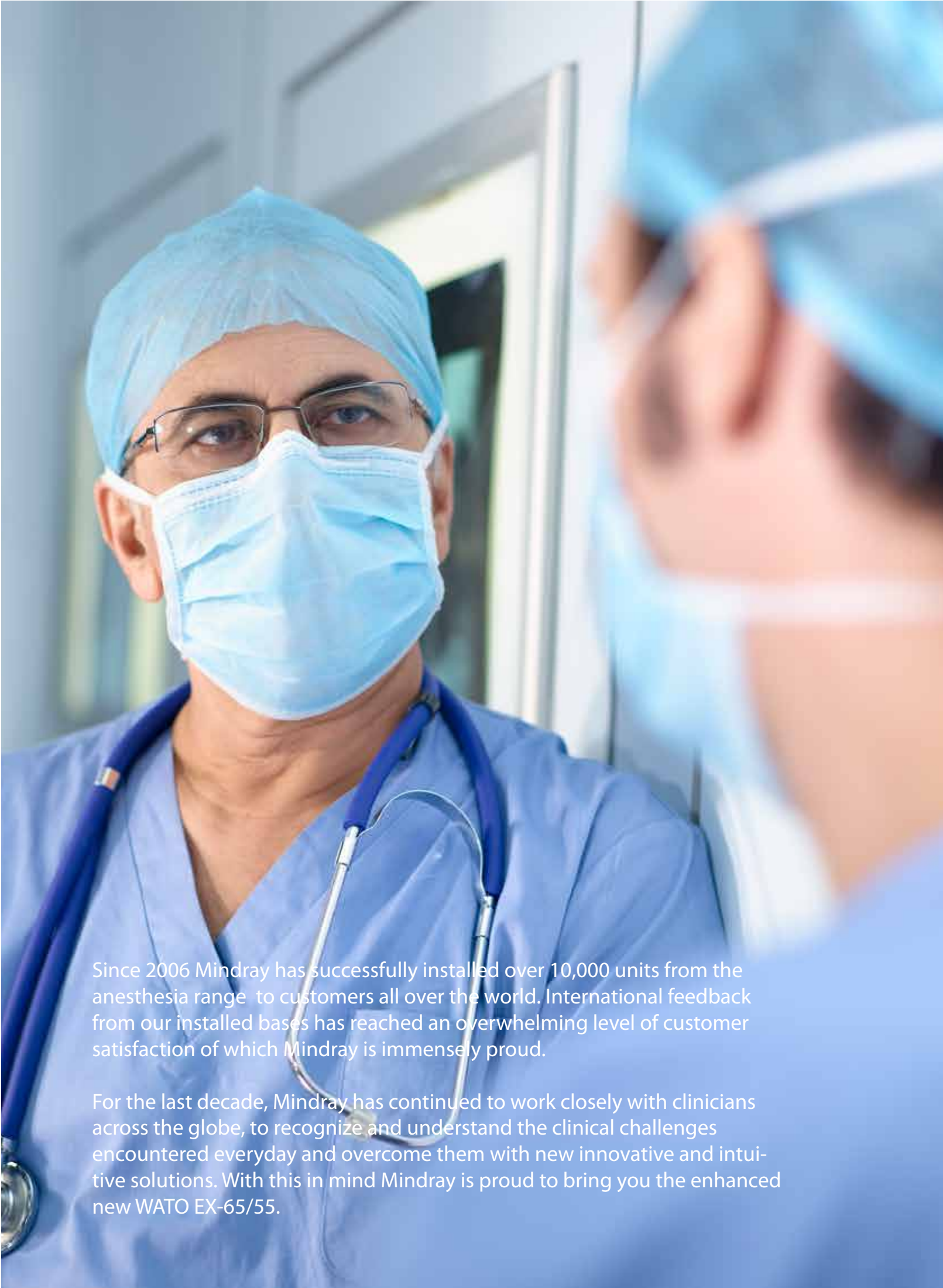
NEW
WATO EX-65/55
the enhanced anesthesia workstation

Mindray Building, Keji 12th Road South,
High-tech Industrial Park, Nanshan, Shenzhen 518057, P.R. China
Tel: +86 755 8188 8998 Fax: +86 755 26582680
E-mail: intl-market@mindray.com www.mindray.com

mindray | healthcare within reach are registered trademarks or trademarks owned by Shenzhen Mindray Bio-medical Electronics Co., LTD.
©2014 Shenzhen Mindray Bio-Medical Electronics Co., Ltd. All rights reserved. Specifications subject to changes without prior notice.
Pls refer to user manual for manufacturer information
P/N:ENG- new WATO EX-65/55-210X285X8PX20160225

mindray
healthcare within reach

mindray
healthcare within reach



Since 2006 Mindray has successfully installed over 10,000 units from the anesthesia range to customers all over the world. International feedback from our installed bases has reached an overwhelming level of customer satisfaction of which Mindray is immensely proud.

For the last decade, Mindray has continued to work closely with clinicians across the globe, to recognize and understand the clinical challenges encountered everyday and overcome them with new innovative and intuitive solutions. With this in mind Mindray is proud to bring you the enhanced new WATO EX-65/55.

WATO EX-65/55

NEW

the enhanced anesthesia workstation



More Powerful

The new WATO EX-65/55 takes the recognized feature-rich anesthesia workstation to the next level. Equipped with smarter ventilator technology and enhanced monitoring capabilities the new WATO EX-65/55 supports control and support modes of ventilation, including PCV-VG, SIMV-VG, PSV (+Apnea back-up) and many more to fully meet the needs of all your patients.

The new anesthetic agent calculation software and intuitive UI enables the user to make efficient mode settings and control expensive agent usage which helps to reduce the associated costs.

More Integrated

The new compact WATO EX-65/55 has a space saving design with even more functionality.

The Plug-and-Play Multi-Gas module provides comprehensive breath-by-breath analysis of FiO_2 , EtO_2 , CO_2 , N_2O , auto-identification of 5 anesthetic agents and BIS.

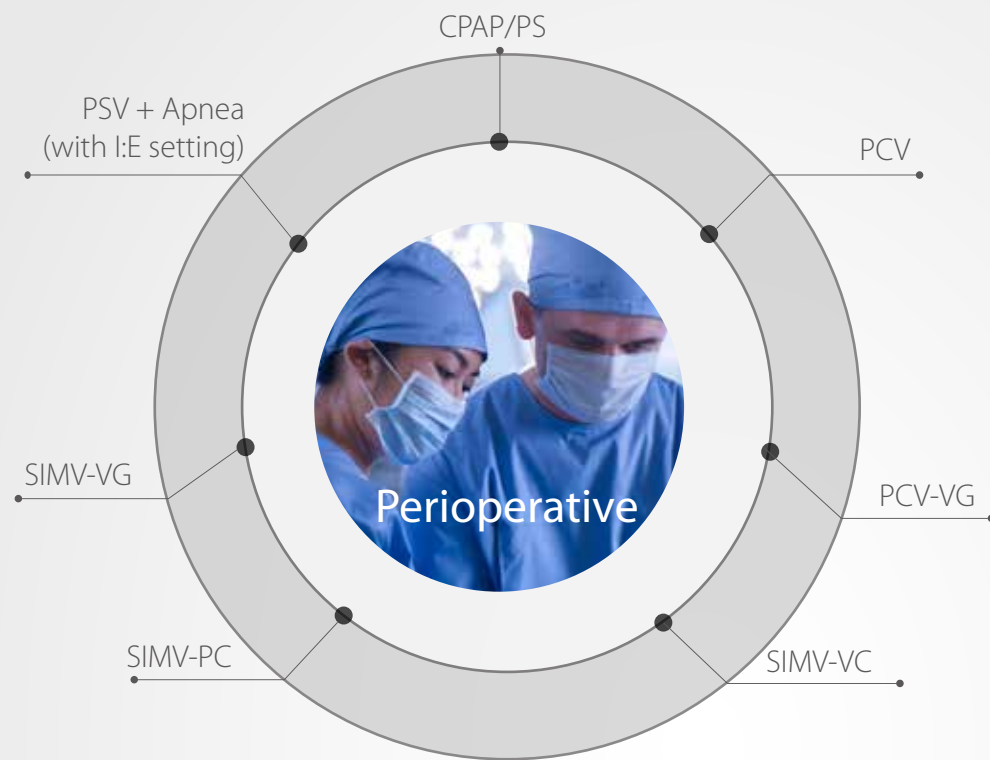
The optional patient suction system is built in for your convenience.

More User-friendly

With a 12.1/10.4 inch full color touch-screen, the easy-to-use UI supports informed decision making through clearly displayed graphical and numerical data. The new flat-menu structure reduces the amount of interaction required to make control and parameter changes, streamlining your workflow.



More Powerful



Smarter Ventilator

The new WATO EX-65/55 offers a smarter ventilator supporting a complete range of control and support ventilation modes, including brand new modes.

- VCV
- PCV
- PCV-VG
- SIMV-VC
- SIMV-PC
- SIMV-VG
- PSV + Apnea (with I:E setting)
- CPAP/PS

Modern anesthesia ventilators offer a wide variety of ventilation modes, enabling complex ventilation care for the critically ill patient.

The new WATO EX-65/55's ventilator has unique Volume Guarantee modes to deliver desired total volume to the patient in PCV and SIMV modes.

PCV-VG delivers the desired tidal volume to the patient, offers the benefits of PCV with lowest inspiratory pressure for all breaths, better oxygenation, along with the security of consistent tidal volume.

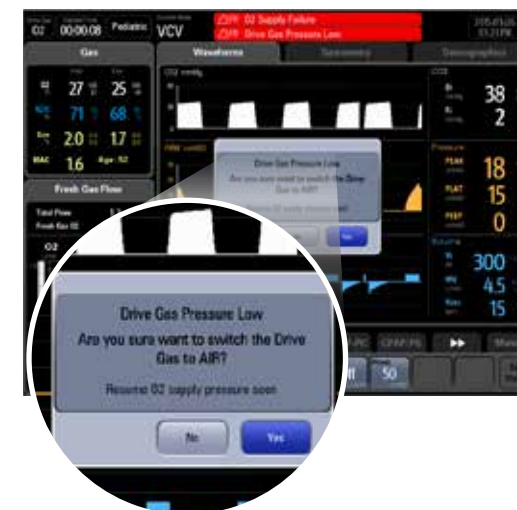
SIMV-VG delivers a set rate of pressure controlled breaths with a guaranteed volume to the patient. The patient can breathe spontaneously between mandatory breaths. Pressure support can be used to support the spontaneous breaths.



AA Measurement

The new anesthetic agent calculation software enables the user to monitor agent consumption and keeps cost in mind.

A new fresh gas flow O₂ percentage display enables the user to make accurate informed fresh gas settings, ensuring the patient is correctly oxygenated at all times.



Driven Gas Auto-switch

To ensure the patient is ventilated at all times the new WATO EX-65/55 has a unique driven gas auto-switch function. Should the primary ventilator driven gas be lost the device will automatically switch to Air (or O₂; dependent on device configuration) without interruption to mechanical ventilation.



Integrated, Heated Breathing System

With an integrated, user-controlled, heating system rain-out is reduced to a minimum providing improved flow sensor accuracy and guaranteeing extensive stability of tidal volume delivery.

Both reusable and disposable soda lime canisters are compatible with the breathing circuit.



More Integrated



Compact Design,
Smaller Footprint

+
1

The new WATO EX-65/55 with a minimal footprint is ideal for the modern, busy and crowded OR suite. A space saving device that doesn't compromise on features or functionality.

+
2 PnP Multi-Gas
Module



With improved single slot CO₂ module or double slot anesthetic agent capability the Mindray Plug-and-Play Multi-Gas modules provide comprehensive breath-by-breath analysis of FiO₂, EtO₂, CO₂, N₂O, auto-detection of five anesthetic agents, as well as BIS.

Optional Integrated
Suction for Better
PeriOP Management

+
3



The new built in patient suction system (optional) provides the user with immediate access to a user-controlled suction system that is both neat and convenient.

More User-friendly



Better Maneuverability

To ensure your device can be positioned easily the new WATO EX-65/55 has been developed with features to facilitate ease of movement. Easy access handle grips and large smooth running castors mean the new WATO EX-65/55 can be easily moved with one hand and locked securely into place with one press on the central locking brake.



Intuitive UI Simplifies Your Workflow

Configured with a high resolution, intuitive, 12.1/10.4 inch full color touch-screen users are able to view and configure parameters as required. The intuitive layout and simple flat-menu structure ensure all parameters are clearly displayed and only two steps required for ventilation mode setting.



Large Easy-to-clean Worktable

The large, new, seamless and easy-to-clean writing table provides an optimized work surface for writing all your documents and keeping drugs and intubation equipment in a handy location.